

Roll - Display

ISOframe ripple

by Marc Bric



ISOframe - Kit 2
Breite 400 cm Höhe 210 cm

3 x Fix - Element
2 x Flex - Element
Transport - Container mit Tablar
2 x LED - Leuchte
5 x Printbahn 4'570.--

Das Set kann in einem Container transportiert werden.

Zusatz - Empfehlung:
Container für Printbahnen 166.--
Die Printbahnen sind dabei besser geschützt und bequemer im Handling.

Fix - Element mit Print 811.--
Flex - Element mit Print 669.--

Andere Konfigurationen auf Anfrage.



ISOframe - Kit 1
Breite 240 cm Höhe 210 cm

2 x Fix - Element
1 x Flex - Element
Transport - Bag (Tasche)
2 x LED - Leuchte
3 x Printbahn 2'550.--

Optional
Monitorhalter 44.--

Transport - Container mit Tablar 325.--



Zusatz - Container

Messebau.
Ausstellungssysteme.
Präsentationsmedien.

Showroom St.Gallen
Expo Norm AG
Schachenstrasse 9
9016 St.Gallen
T 071 282 38 00

info@exponorm.ch
www.exponorm.ch

Roll - Display

ISOframe ripple

by Marc Bric



Messebau.
Ausstellungssysteme.
Präsentationsmedien.

Showroom St.Gallen
Expo Norm AG
Schachenstrasse 9
9016 St.Gallen
T 071 282 38 00

info@exponorm.ch
www.exponorm.ch

Roll - Display

ISOframe ripple

by Marc Bric



1 Start by clicking the bottom beam onto the foot.



2 Mount the base post onto the foot and lock it with the FASTclamp.



3 Mount the centre post onto the top of the base post.



4 Slide the top beam into the bottom of the top post and push it down into the beam.



5 Mount the top post with the attached top beam onto the top of the centre post.



6 Mount the graphic panel, starting at the top left side and proceeding to the right.



7 At the bottom of the graphic panel and pull it down to push it onto the bottom beam at each stripe.



8 Build up the next stand, following points 1-7.



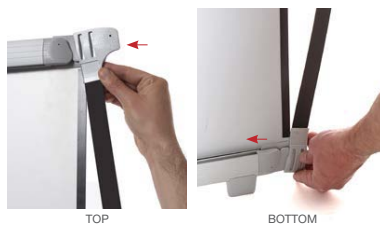
Messebau.
Ausstellungssysteme.
Präsentationsmedien.

Showroom St.Gallen
Expo Norm AG
Schachenstrasse 9
9016 St.Gallen
T 071 282 38 00

info@exponorm.ch
www.exponorm.ch

Roll - Display

ISOframe ripple
by Marc Bric



9 Slide in the top and bottom graphic joint from the side and mount the magnetic tape on the sides where you want to attach the Flex-Link graphic panel.



10 Attach the blind graphic panel between your two Ripple Stands



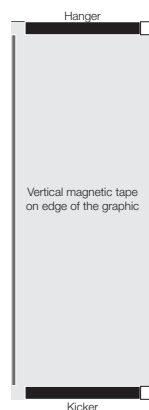
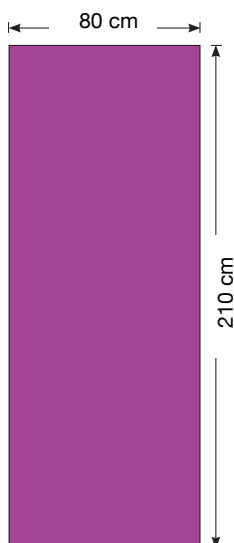
11 Now you can add more stands and blind panels.

Release the foot



1 To release the foot from the bottom beam, press the two handles at the centre and lift up the foot.

Grafikmasse



Messebau.
Ausstellungssysteme.
Präsentationsmedien.

Showroom St.Gallen
Expo Norm AG
Schachenstrasse 9
9016 St.Gallen
T 071 282 38 00

info@exponorm.ch
www.exponorm.ch